



SANSERA Corporate Social Responsibility

Sansera believes in Corporate governance, and understands that in order to nurture a better society one must give back to the communities. Being an equal opportunity employer, Sansera believes in providing the platform for skill and talent to flourish. Sansera CSR activities ethics are designed to help in education of mentally challenged/deprived and poor children, also improving their civic responsibilities. This is being achieved by adopting Government Schools in the vicinity of the factory and making its employees to carryout various activities in the adopted school.

SANSERA's CSR programmes support a host of initiatives under the 5 branches with support of its Employees as under:

- *Citizen Involvement*
- *Education*
- *Healthcare*
- *Environment*
- *Infrastructure*

CSR at SANSERA is about identifying those areas where a need can be met and devising simple methods of enabling its [employees to fulfil that need](#).

Our Partners in CSR programs

SANSERA is also partnering with various Establishments & NGO's by promoting their activities through financial help. **SANSERA** also wish to play a very large role by educating the citizens of the local area to become a responsible corporate citizen. This will be achieved through participation of the citizens in Garbage elimination, Tree planting, Rainwater harvesting etc. This is being done with the help of Local Panchayat, BBMP and Other NGO's.



**Full Circle
Resource Recovery Inc.**








**K K Plastic
Waste Management Ltd.**

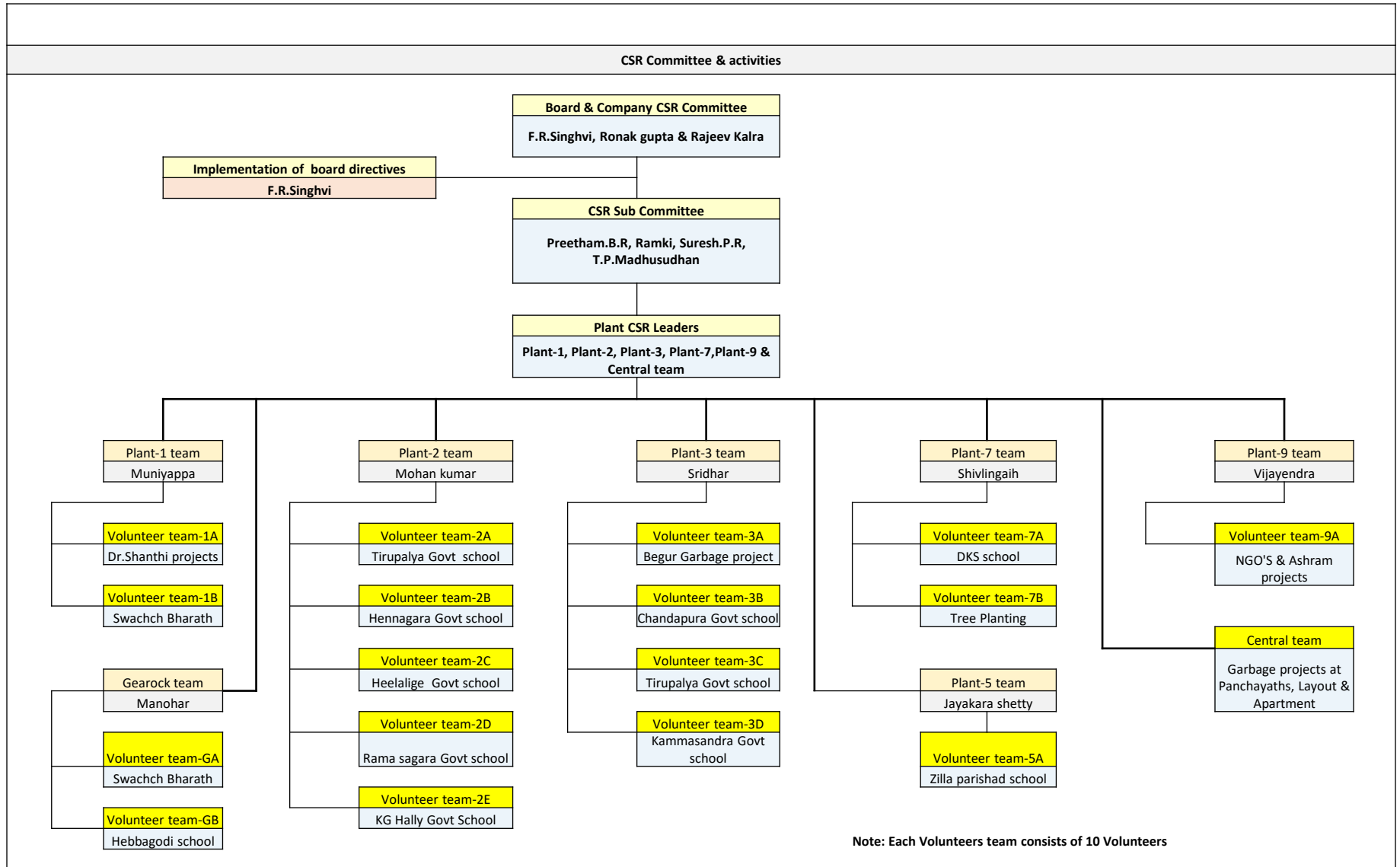


**Bommasandra
Grama panchayat**



		Name & Type of Social Service	Location	SANSERA Contributions
1	 MANONANDANA <small>Centre For Mentally Retarded And Multiple Disabled Children</small>	Manonandana School	Basavanagudi, Bangalore	Supporting for Teachers Salary
		Mentally Challenged Children School		
2	 Vidyaranya	Vidyaranya School	Manduru	Construction of Wash room
		Mentally Challenged Children & Old age School		
3	 GLOBAL CONCERNS INDIA	Global Concern India	Bangalore	Sponsoring for 100 Slum children Education every year
		Working on Education of Slum Children		
4	Bhavatharini Ashram	Bhavatharini Ashram	Polo hally, Magadi	Sponsored for Meditation block construction & Rain water harvesting
		Spiritual centre		
5	 AKSHAYA PATRA <small>Unlimited food for education</small>	Akshya Pathra foundation	Bangalore	Sponsoring for 100 Children Mid day Meal Every year
		Mid day meal to School children		
6		Kaushalya Vikasa Kendra	Gottigere, Bangalore	Sponsoring for Furniture procurement
		Vocational Training centre for un organised sectors		

CSR Program Sectors →		I			II						III				IV	
		Citizen involvement			Education						Health				Environment	
CSR programs Sub sectors →		1	2	3	1	2	3	4	5	6	1	2	3	4	1	2
CSR Program Categories ↓																
A	CSR Programs with engaging Sansera CSR volunteers	Garbage Elimination	Helping the physically challenged	Clean Drive at Community(Swachch Bharath)	Co curricular classes at Adopted schools	Providing Scholarship	Supporting NGO's on Education	Deprived / Slum / Poor children Education	Teachers motivation by giving award	Facility provision to adopted Schools	Blood donation	Eye test, spectacle & surgery	Dental Check up	Rural Hygienic & sanitation	Tree planting	Rain water harvesting
B	CSR Programs Partnering with NGO's															
C	CSR Programs to support NGO's															
D	CSR Programs Partnering with Corporates															



EYE CAMP, PLANTATION & SWM PROGRAM

Event : Eye Camp, Plantation & Waste Management Awareness Program

Date : 03/01/2014

School : GHPS Heelalige

Event Partner : Vasan Eye care



EYE CAMP, PLANTATION & SWM PROGRAM

Event : Eye Camp, Plantation & Waste Management Awareness Program

Date : 18/01/2014

School : De Sales Academy

Event Partner : Vasan Eye care



Thank you

“ There is no separate existence of God. Everybody can attain God-hood by making supreme efforts in the right direction”